

SACRED VALLEY



T ROSCOE

ANDY ROSCOE'S FREE INCAN TOUR GUIDES

Interactive Maps and Tour Guides available at:

[AndyRoscoe.com/peru](https://www.AndyRoscoe.com/peru)



6. NICHES AND CHURCH. D ROSCOE

DESCRIPTIONS

1. **PISAC** see [Pisac Tour Guide](#).

2. **HUCHUY CUSCO**. “Little Cusco.” Excellent view over the Urubamba valley. 3.1mi from Calca and 2600ft up. Originally called Caquia Jaquiahuana.

A royal estate for [Inca Viracocha](#). He conquered the town by setting it on fire with a stone from his golden sling.

1438, [Chancas](#) attacked [Cusco](#), he fled to here. The spanish found his mummy here. Buildings were part stone, part adobe. A fine 131ft [kallanka](#). It looks out to an esplanade and terraces, maybe parades or games were played here. Post-inca, transitional style buildings and reservoir also here. Some buildings have “horizontal wooden struts” at the corners. Originally thought that these would protect the buildings from earthquakes, but the corners are already the strongest part of inca buildings.⁴

Access by foot only, shortest is from Lamay bridge: 3hrs, easy but steep.⁴ See website for detailed path. Location based on map by Frost.

3. **CALCA**. 12mi from Cuzco. 20mi from [Ollantaytambo](#).⁸ 11mi from Pisac.⁴ Caytomarca is on the other side of the river.¹³

Agricultural terraces maintained by canals from far above glaciers.¹⁵

Main town in Sacred Valley. Has an incan square and a spanish square. Has nice orchards and gardens. Manco Capac II had his headquarters here during the 1536 Rebellion. The spanish charged the town and forced out the incas early in the rebellion, but left soon with Cusco under attack. Almagro re-captured



1. A ROSCOE



2. HEMMING, RANNEY

the town on his return from Chile. But he was forced out by Manco and chased to Cusco.⁴

1536 APR 18. [Manco Capac II](#) and [Villac Umu](#) leave Cuzco under the pretense of bringing gold back for [Hernando Pizarro](#). They got to Calca and began organizing the siege.⁸

[Diego de Almagro](#) advanced here with a small group of men, leaving most in [Urcos](#). He was to negotiate an agreement with Manco and claim Cuzco for himself. Manco had received a letter from the Pizarros to not trust Almagro. Manco demanded that Almagro put captured Pizarro-supporting scouts to death as a way to show



6. PALACE. MCGAREY

his union with Manco. Almagro hesitated and Manco had the local chief **Paucar** swoop down in attack to no avail. Manco knew he could not stay with any Spanish. He returned to Ollantaytambo.⁵

BATTLE OF CALCA.

Manco rises an army in the thousands. **Juan Pizarro** was sent to bring him back.¹⁰ With 70 c1ry.⁸ The Incan army was on one side of the Yucay R and 60 Spanish horse on the other. The Spanish swam their horses across and charged into the army. The Incas fought strongly and killed and wounded many Spanish, though they were forced to pull back onto the hillside.¹⁰ Manco quietly fled.⁸

The next morning the whole mountain side was renewed with Inca army. The ground favored the Incas, who showered the Spanish with missiles and rolled large boulders down upon them. Juan was called back to Cuzco which was being attacked and the Incas celebrated their success. See [Cusco History](#) for next.¹⁰

4. URCO. Near Calca. Offertory channel ends at the head of a snake.⁵

Location not precise (map shows it to be very close to Calca). Architecture probably belonging to an Inca royal estate.⁹

5. PITUSIRAY MOUNT. Twin peaks that over look Calca.¹³

6. CHINCHERO. "Town of the Rainbow" Also



4. HEMMING, RANNEY



6. TERRACES. MCGAREY

called Clinta and Calispuquio. On the road from Cuzco to Sacred Valley and past the lakes of **Huaypo** and **Piuray**.¹⁴ Beyond Sacsahuaman, 9mi from Cuzco.⁵

Population of center of Pampa de Anta, before inca expansion. Later a royal estate of **Topa Inca**. Now has a large Sunday market. Has a great view over the pampa. The main plaza has a massive inca wall with 10 large niches, largest known. Probably the base of Topa Inca's palace. The church sits on top of it. Church was originally fully painted on the inside with flowers and patterns.⁴

Just north of Chinchero is a terraced valley with 3 unique rock shrines. 1. large rock outcrop with two stairways carved into it. 2. Chingana Stone, top right, farther down valley, has a miniture stairway and stream underneath. 3. interesting shallow indentions, bottom right.⁵

While facing the church, to the left past the village on the slopes are inca terraces. Walk N from the church, follow the terraces down valley, stay on the right side of the slope. There is a



10. A ROSCOE

large carved rock outcrop.⁴

Chingana Stone.⁵

Above are stairways, seats, and water channels. There's also a carved drainpipe cut vertically into the rock. Be careful there's a 30m drop to a grotto under the outcrop.⁴



7. HYSLOP, BRIDGES

Farther down the valley is another carved outcrop with long stairway with a large niche overlooking the valley. The top of the outcrop has a circle of seats carved into it.⁴

7. PURAY LAKE. Piuray, Chinchero Lake. On the road from Cuzco to Sacred Valley, before you get to Chinchero.¹⁴ Sacred lake. 7

Just after the Siege, the Spanish were starving and facing another siege. [Hernando Pizarro](#) charged straight into Manco's best contingent at night. He surprised them and massacred them. He charged into the lake "spearing the natives like fish."⁵

8. PACHATUSSA MOUNT. Location unsure. N of Cuzco. 15,915ft. 5 small snow clad peaks.³

9. PLAINS OF CHITA. NE of Cuzco. Where [Inca Viracocha](#) saw Viracocha. See [Temple of Viracocha](#).¹² Near here is Chitapampa.²

10. TAMBO MACHAY.

Ritual bathing and maybe a water cult focused here. There's a spring that channeled into 3 waterfalls. Probably there were originally ornamental gardens surrounding the site.⁴

[Pachacutec](#) received a prophecy here about becoming a conquerer. [Tupac Yupanqui](#) used the location as a hunting lodge.¹⁴

Possible location of where on Nov 21 festival, when Inca boys were made men, they were bathed and changed clothes then lectured on their return.^{Molina, 3} House of Inca Yupanqui, he was married here. Many sacrifices were made here "except children."³

Stone fountain with a warm minerals spring with beautiful terrace, on top is a wall with 4 full height ceremonial niches. Timpucpuquio is the name of the spring.³ "Cavern lodge". Also called Bano del Inca.⁴ The slope behind the site is not high enough to support so much water. It must be coming underneath and from the mountain opposite.⁴

Tampu Machai. Few miles from [Puca Pucara](#).¹ Above Pucara along Lkalla Chaca R.³

11. PUCA PUCARA. Pucara, Red Fortress.¹ Small fortress guarding the Sacred Valley. It has terraces, stairways, tunnels, and towers. Carefully built symmetrical stonework.¹⁵ Excellent stone work, fitted between 2 small cliffs, drains for terraced flooring inside.³

3.7mi past [Qenco](#).¹¹ First tampu outside of Cuzco.¹⁵ At the foot of the pass that leads to Pisac.³

12. QENCO. See [Cusco Guide](#).

13. SACAHUAMAN. See [Sacsahuaman Guide](#).

14. CUSCO. See [Cusco Guide](#) and [History](#).

15. TEMPLE OF THE MOON / SALUMPUNCU / LAQO. Lajo. Near Kenko. Cave passages with the Tiahuanaco step pattern carved into the rock.⁵



15. TOP. T ROSCOE



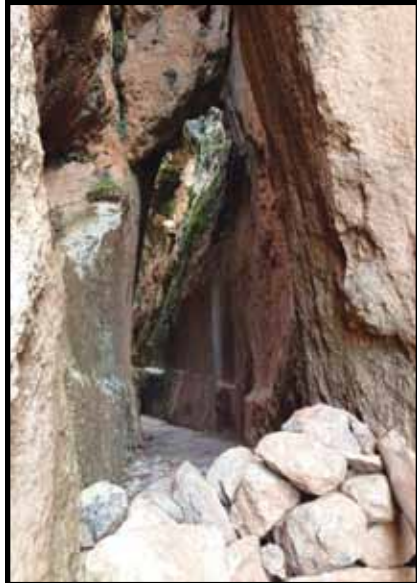
11. ALVA

See [Cusco Interactive Map](#) for precise location.

Two caves are on S side. A large crack runs the width of the rock, wide enough to walk through. Cave on SE side is highly **carved of pumas and snakes. Inside are niches** for holding mummies and an altar. On full moon before winter solstice, moonlight shines upon the **altar**.⁴



12. A ROSCOE



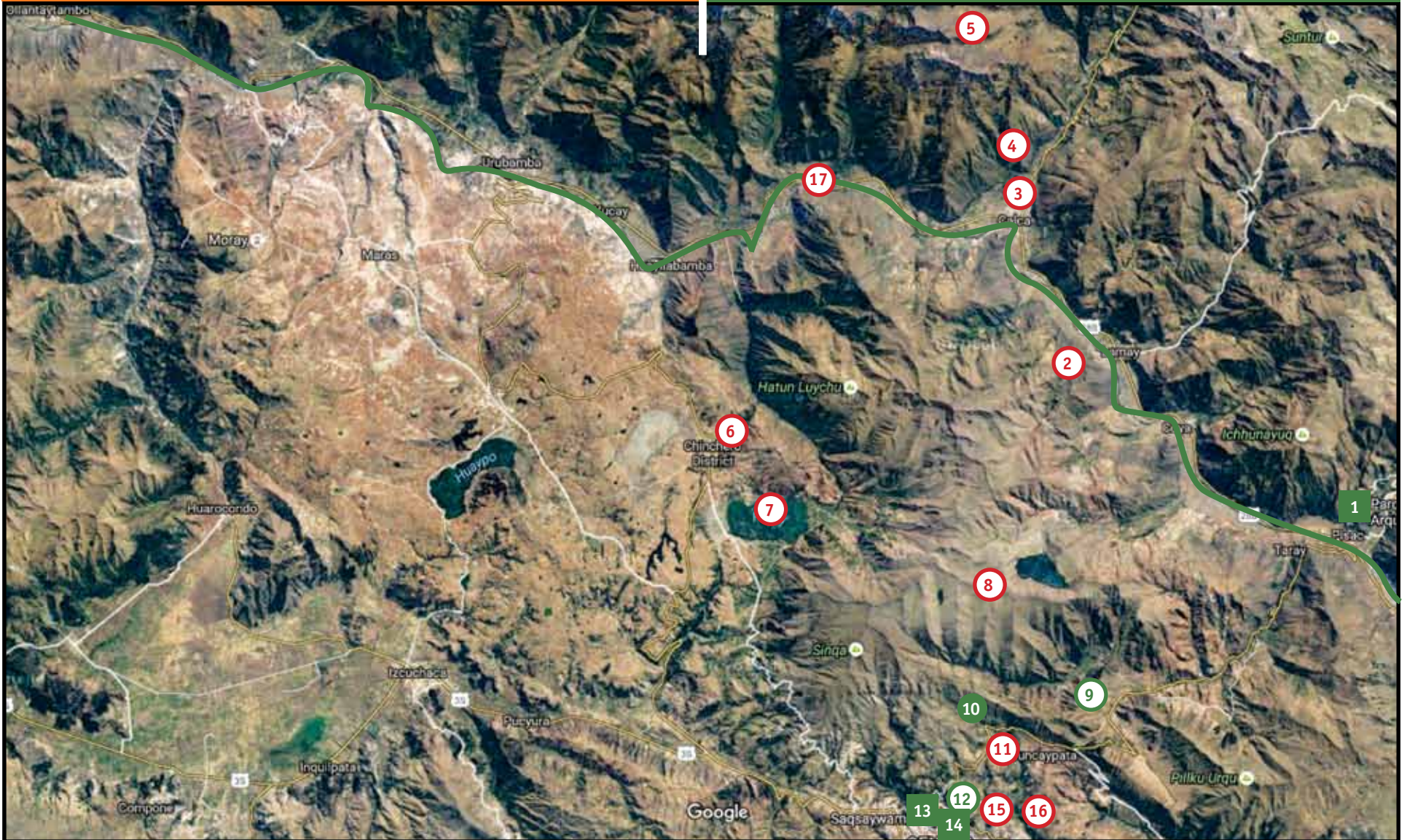
15. CRACK. T ROSCOE

16. INKILTAMBO. Many deep niches, probably for mummies of the ayllu responsible for its upkeep. W and S sides, below are carved channels and ritual bath. On top of the outcrop is a 'carved fissure with 2 deep niches.' On equinoxes the sunsets in the center of this fissure.⁴ See [Cuso Interactive Map](#) for more.

17. URUBAMBA RIVER.



14. T ROSCOE



- 18. OLLANTAYTAMBO
- 19. PACHAR
- 20. MORAY
- 21. MARAS
- 22. URUBAMBA
- 23. YUCAY
- 24. HUAROCONDO
- 25. IZCUCHACA
- 26. PROBABLE ROUTE

- LEGEND**
- 7 Location without photo.
 - 6 Location with photo.
 - 5 Location with needed photo.

Google Maps

- 1. PISAC
- 2. HUCHUY CUSCO
- 3. CALCA
- 4. URCO
- 5. PITUSIRAY MT
- 6. CHINCHERO
- 7. PURAY LAKE
- 8. PACHATUSSA MT
- 9. PLAINS OF CHITA

- 10. TAMBO MACHAY
- 11. PUCA PUCARA
- 12. QENCO
- 13. SACSAHUAMAN
- 14. CUSCO
- 15. TEMPLE OF THE MOON
- 16. INKILTAMBO
- 17. URUBAMBA R



20. QUECHUYOC. M ROSCOE

DESCRIPTIONS

18. OLLANTAYTAMBO. See [Ollantay Tour Guide](#).

19. PACHAR. Pacchan. Architecture probably belonging to an Inca royal estate.⁹

RR to [Machu Picchu](#) and [Vilcabamba](#) area. Built in 1923, re-opened by Nicholas Asheshov.¹⁴ On the south bank of the [Urubamba R](#), where the RR begins traveling down the Urubamba valley. Maybe these held screens to block strong winds. RR halts where the Huarcondo R meets the Urubamba R. Store houses can be seen on cliffs to the left.⁴

20. MORAY. Fabulous agricultural terracing. Natural hollows in the mountains were set with concentric terraces, circles into the ground. Each terrace gets colder and colder. For freeze drying potatoes.

Architecture probably belonging to an Inca royal estate.⁹

Area around Maras is a "shaky bed of salt and soluble minerals." Rich in calcium sulphate and carbonate. Spots have collapsed into sinkholes and craters. Underneath are eroded tunnels carrying water to Urubamba R.⁴

Sunlight and shade creates a tremendous variance in temperature in a very small area - up to 15 degrees Celcius from bottom to top, 98ft.

John Earls, ⁴ Special high altitude strains of crops were developed. If corn had not been developed at a site like this then high population Andean cultures would not have been possible.



20. M ROSCOE



18. D ROSCOE

Temperature was originally measurable by having cups of water freeze over night, then checking the rate of thaw in the morning. Area farming is still a complicated crop rotation and plantings.⁴

Legend holds that the walls were covered in gold and silver to reflect more light on crops.⁴



21. VALLEY. M. ROSCOE

Pottery found from the [Chanapata](#) culture, 0 AD. Also pottery of the [Wari](#). Incas probably refined and enlarged the top few levels.⁴ The [muyus](#) (depressions) have names. [Quechuyoc](#): “warm being”. Largest, best condition, and has 15 terrace levels. [Simiyoc](#): “grass having or tongue having.” [Nustahispanan](#): “where the princess pee’d.” A spring is here. Often believed that springs come from where royalty urinated. [Intiwatana](#): “calendar stone”. Maybe there use to be an [intiwatana](#) here. Climb [Wanuymarca](#): “house of the dead” middle of the 3 peaks to the S.⁴

21. MARAS. Salt pans. Nearby areas owned by [Topa Inca](#). Royal salt works.⁹ **Is this the same as Las Salinas, the site of several colonial battles?**

22. URUBAMBA. “plain of the spider.” **Fortress** on the N bank protects the road and **suspension bridge** with 3 unique massive towers. 1880 steel bridge uses towers for support. Paved road to Ollantay.¹⁵

[Huayna Capac](#) gave the city to his sister-wife, dead mother, favored second wife.⁹

Strong quechua influence, no Spanish. Naturalist Antonio de León Pinelo declared this valley the biblical Eden.¹⁴

2mi from [Yucay](#) at the intersection of the the Cusco-Chinchoero road and Urubamba R.⁴ A great center base for exploring the valley. Lovely village, there’s an avenue along the west side



21. UP CLOSE. M. ROSCOE



21. MORE. M. ROSCOE

“lined with towering pisonays.”⁴

23. YUCAY. Originally [Pachacuti](#) built ponds and pleasure houses here. Then [Huayna Capac](#) built a massive palace and estate here.

1548. [Sayri Tupac](#) was given the estate when he



23. HEMMING, RANNEY

surrendered from the jungle. During a ceremony giving him these lands, Sayri Tupac pulled a thread from the table cloth and declared that this gift was equal to the thread in comparison to his family's holdings. He was shortly poisoned by **Cañari** chief Fransico Chilche.¹⁴ Sayri Tupac lived here 3 years before dying in 1560.³ It became the encomienda of **Francisco Pizarro** and then his son Francisco.⁵

Architecture is huge, super strong, imposing to show how tenuous Huayna Capac's life was. Estate covered 10mi along Urubamba R. Compound built on large terrace with a high wall surrounding it. Adobe bricks, stone foundations, painted. Road approaching rises to the terrace and meets a triple jam doorway with 2 towers on either side (two story). N side of plaza 2 large halls. Opened at plaza end - 144 x 45ft. Gabled roof, brightly painted. Placed small buildings next to them to make them look bigger, an engineering feat.⁹

In contrast to Pisac's following of mountain contours, Huayna built Yucay with it's back turned on the surroundings and focused on man-made areas. He moved rivers and terrain to accomidate this structures. Uses adobe. Culture over nature. Used brightly colored buildings.⁹

An inca square and a spanish square. At Christmas theres a festival with masked dancers. Excellent masonry on the Plaza. Behind the village to the **north are terraces** with the best remaining agricultural systems in the area and still in use.⁴ **Sayri Tupac Palace** is still along one

of the squares - transitional inca architecture.⁴

24. HUAROCONDO. At Zurite, road turned N to Huaracundo, 15mi NW of Cuzco. Remains of **Inca bridge** and **road** remains. Then the road turned W and ran parallel to Antisuyu Rd along Urubamba.¹⁵

25. IZCUCHUACA. Jaquijahuana. Anta. Xaquixaguana. 5 leagues from Cuzco. A stream irrigates the rich vegetation and garden of the valley. Residence of the Incas nobles because of its beauty and coolness, it was used as summer retreats.

In the valley center the river overflows regularly and forms a quagmire. Incas built a stone causeway over the morass.

The same field the the **Pachacuti** led the incas against the **Chancas** which launched the incas into expansion.⁵

Cusi Yupanqui, kinsman and royal official, raised poles along the road and hung **Huascar's** family including wives, sons, 80 children and even fetus. It was a half mile long. Huascar was forced to watch.⁶

This area was given to **Sayri Tupac** upon his emergence from **Vilcabamba**. Gonzalo found inca **Viracocha's** mummy here. He had it burned. Juan Polo de Ondegardo found that his ashes were being venerated even more than the mummy.⁵

1532 Huascar v Chalcuchima.⁵

1533 Francisco v Qiusquis.⁵

1533 OCT. Pizarro's and Almagro's forces unite. Pizarro remained for several days refreshing his troops. He put **Chullcuchima**, **Atahuallpa's**



25. CAUSEWAY. BINGHAM

captured general to trial. He was blamed for the insurgency, burned alive.

[Manco Capac II](#) arrived with a large entourage to announce himself to Pizarro as the new Inca and asked of Spanish protection. More at [Cuzco History](#).¹⁰ He met Francisco Pizarro on his march to Cuzco at Jaquijahuana. He was 17. Manco had been on the run from Atahualpa and his general, [Quisquis](#), who controlled Cuzco and murdered his entire family. Manco wanted revenge and the crown and saw Pizarro as an ally.⁸

1536 Manco v Hernando.⁵

1538 Hernando v Almagro.⁵

1548 APR 9. [Gonzalo](#) is the last Pizarro alive and he's killed the first Spanish viceroy. He prepared for battle with the second viceroy, [Pedro de la Gasca](#) here. Each side had 1500 troops. The majority of Gonzalo's troops betrayed him and switched side to Viceroy. He surrendered and was soon executed.⁸

OTHER MAPS INCLUDE:

CUSCO AND THE SACRED VALLEY:

- [Cusco Guide](#) – capital of the Incas.
- [Cusco History](#) – history of the capital.
- [Cusco ceque map](#) – holy lines / sites.
- [Coricancha](#) – sun temple in Cusco.
- [Sacsahuaman](#) – fortress near Cusco.
- [Ollantaytambo](#) – fortress in Sacred Valley.
- [Sacred Valley](#) - area north of Cusco.
- [Pisac](#) – major Inca site in Sacred Valley.

MACHU PICCHU AND INCA TRAIL:

- [Machu Picchu](#) – original lost city.
- [Chachabamba](#) – near Machu Picchu.
- [Choquesuysuy](#) – near Machu Picchu.
- [Huayna Picchu](#) – overlooks Machu Picchu.
- [Inty Pata](#) – near Machu Picchu.
- [Phuyu Pata Marka](#) – along Inca Trail.
- [Sayac Marka](#) – along Inca Trail.
- [Winay Wayna](#) – near Machu Picchu.

CHINCHASUYU AND CUNTISUYU:

- [Saihuite](#) – oracle along Apurimac.

COLLASUYU:

- [Temple of Viracocha](#) – largest building.

OTHER RESOURCES INCLUDE:

- [Glossary of quechua](#)
- [Inca rulers](#)
- [Historic names](#)
- [Religion](#)
- [Tribes](#)



DYING AT CHINCHERO. MCGAREY

MINI-BIBLIOGRAPHY

If you like to contribute photos, I'd love to have your help, andy@andyroscoe.com

See [Full Bibliography](#) at website.

Photography: Patrick McGarey, Tricia Roscoe, David Roscoe, Monica Roscoe.

1. Alva, Walter. Longhena, Maria.
2. Bauer, Brian.
3. Bingham, Hiram.
4. Frost, Peter.
5. Hemming, John.
6. Hyams, Edward. Ordish, George.
7. Hyslop, John. Bridges, Marilyn.
8. MacQuarrie, Kim.
- National Geographic.
9. Niles, Susan.
10. Prescott, William.
11. Rosa, Mark.
12. Squier, E George.
13. Steele, Paul
14. Thomson, Hugh.
15. von Hagen, Victor.